

FACT SHEET

Hog Deer hunting in Victoria

Who can hunt?

To be eligible to hunt Hog Deer in Victoria you must:

- hold a current Victorian Game Licence endorsed to hunt deer
- obtain a pair of Hog Deer tags from the Game Management Authority and have them in your possession while hunting.

To hunt Hog Deer with a firearm you must hold a current Firearms Licence issued by Victoria Police.

Dogs must not be used to hunt Hog Deer.

Open Season

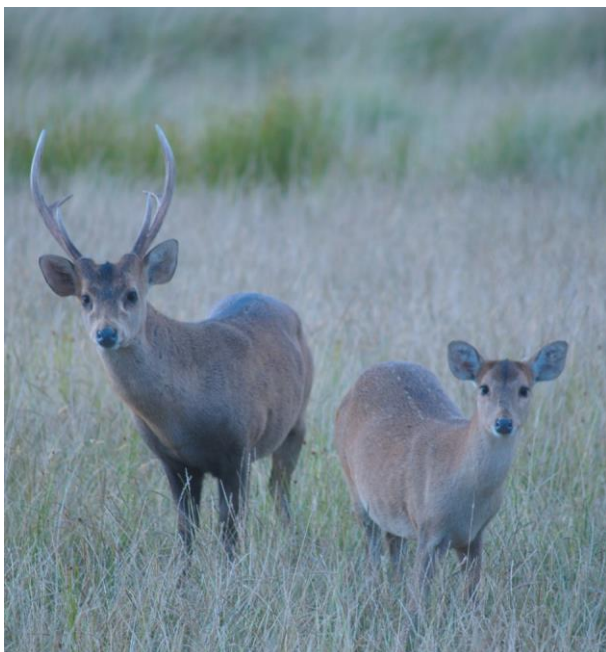
Hunting Hog Deer is only permitted during open season.

The Hog Deer open season:

- opens 30 minutes before sunrise on 1 April
- closes 30 minutes after sunset on 30 April.

Bag Limit

During the Hog Deer open season a strict bag limit applies. Tag recipients can take one male (stag) and one female (hind).



Hog Deer (*Axis porcinus*) male and female

Where can I hunt Hog Deer?

Hog Deer can be found in a range of areas along the south-eastern coast of Victoria. Hunters are responsible for knowing where it is legal to hunt.

Land classification	Hog Deer hunting permitted
State Forest, Licensed Crown Land and other unoccupied Crown Land	During open season only.
State Game Reserves	During open season only in: Jack Smith Lake, Dowd Morass, Lake Coleman, Heart Morass, Clydebank Morass, Ewing Morass.
National Parks, State Parks, Coastal Parks, Wilderness Parks	Most Parks are closed to hunting. Exceptions for Hog Deer are sections of Alpine National Park, Avon Wilderness Park, Baw Baw National Park, Tara Range Park, Gippsland Lakes Coastal Park and Nooramunga Marine and Coastal Park during open season only.
Leased Crown land	During open season only and with permission of lessee.
Private land	During open season only and with permission of land owner, manager, lessee or licensee.
Sanctuaries	Not at any time.
Flora and Fauna Reserves and Nature Conservation Reserves	Not at any time.

Further information on where to hunt is available on the More to Explore phone app, which can be downloaded for free. Remember to clearly identify the boundaries of the land where you are intending to hunt. If in doubt, contact the relevant land manager.

Equipment

Legal equipment for hunting Hog Deer includes:

Centrefire rifle

The centrefire rifle must have a minimum calibre 6.17 mm (.243") and a minimum projectile weight 5.18 grams (80 grains).

Muzzle-loading rifle

The muzzle-loading rifle must have a minimum calibre 9.65 mm (.38") and a minimum projectile weight 12.96 grams (200 grains).

Long bow / recurve bow / compound bow

These bows must have a minimum draw-weight of 20 kg (45 lbs). Broad-heads must be used and have a total minimum weight of no less than 22.5 grams (350 grains) and a minimum of two sharpened cutting blades.

Crossbow

The crossbow must have a minimum draw-weight of not less than 54.4 kg (120 lbs). Bolts must have broad-heads with a minimum of two sharpened cutting blades, with a combined weight not less than 22.5 grams (350 grains).

Partially rifled or smooth bore firearm

The firearm must be not less than 20 bore and not greater than 12 bore, with a single solid projectile having a weight of not less than 15.88 grams (245 grains). The firearm must be fitted with a front and rear iron sight (other than a beaded sight or beaded sights), a telescopic sight or a reflex sight.

Tag system

Hunters must obtain a pair of Hog Deer tags prior to hunting. There are two tags, one for female and one for male Hog Deer.

The tag pack system has changed recently. Hog Deer tag packs can only be obtained through the GMA website. Plan ahead as tag packs are no longer available for collection from Victorian Government offices.



Hog Deer tag correctly locked in position around bone.

Tags must not be defaced, altered, transferred or lost. All tag recipients MUST complete and return the Hog Deer Tag Return Form to the GMA within 28 days of the end of season regardless of whether a Hog Deer was harvested. Penalties apply for failing to return Hog Deer Tag Return Forms on time.

Harvested Hog Deer

You must carry your Hog Deer tags with you when hunting. The correct sex-specific tag must be immediately attached to a harvested Hog Deer. It is inserted between the main bone of the rear leg and the main tendon, completely encircling the bone.

The head and body must stay intact. In the field you may cape an animal and field-dress (gut) the animal. If a hind has a fetus, note the length and stage of development. If possible collect it for the Checking Station operator. To assist jaw removal place a chock in the mouth, if possible.

All harvested Hog Deer must be taken to a Checking Station within 24 hours. Harvested deer are aged with the removed jaw and important measurements and biological data are recorded. You can then break down the deer after this process.

You MUST telephone a Checking Station operator to arrange an appointment. Checking Station operators details are available on the Checking Station fact sheet and on the GMA website at www.gma.vic.gov.au

Published by the Game Management Authority, November 2019.

© The State of Victoria 2019.

This publication is copyright. No part may be reproduced by any process except in accordance with the provisions of the Copyright Act 1968.

Authorised by the Game Management Authority, Level 2, 535 Bourke Street, Melbourne Vic 3000.

ISSN 2205-9431 (Print) ISSN 2205-944X (Online)

Disclaimer

This publication may be of assistance to you but the State of Victoria and its employees do not guarantee that the publication is without flaw of any kind or is wholly appropriate for your particular purposes and therefore disclaims all liability for any error, loss or other consequence which may arise from you relying on any information in this publication.

For more information about Game Management Authority go to www.gma.vic.gov.au